



## Product Outline

# Simple Solution

For over 45 years, Shini Group Focusing on Particular Business & Pursuing to be the World's Leader in plastics auxiliary equipment which created new era and achieved many progresses.

Shini group is able to help you on whole plant planning for injection application and extrusion application by Feeding & conveying, drying & Dehumidifying, dosing & Mixing,- temperature control and system cooling, grinding & recycling ,Robots and automation.

**Customer Service:** Shini focused on reliable and flexible after sales service to meet all types of requirement

**User-Oriented Product Design:** Shini Group consistently work on new product design technology for better understanding and user friendly application.

**One-stop Shopping:** Shini Provides one stop shopping experience to build-up trustful and long term business relation.

Shini plastics auxiliary equipments are the most advanced production equipments in the world and practical in energy saving and enhance production efficiency.

Shini focuses on consistently new innovation,process optimization,modern management system and human resources in order to built up a intellectual team of international perspective.

West China Factory



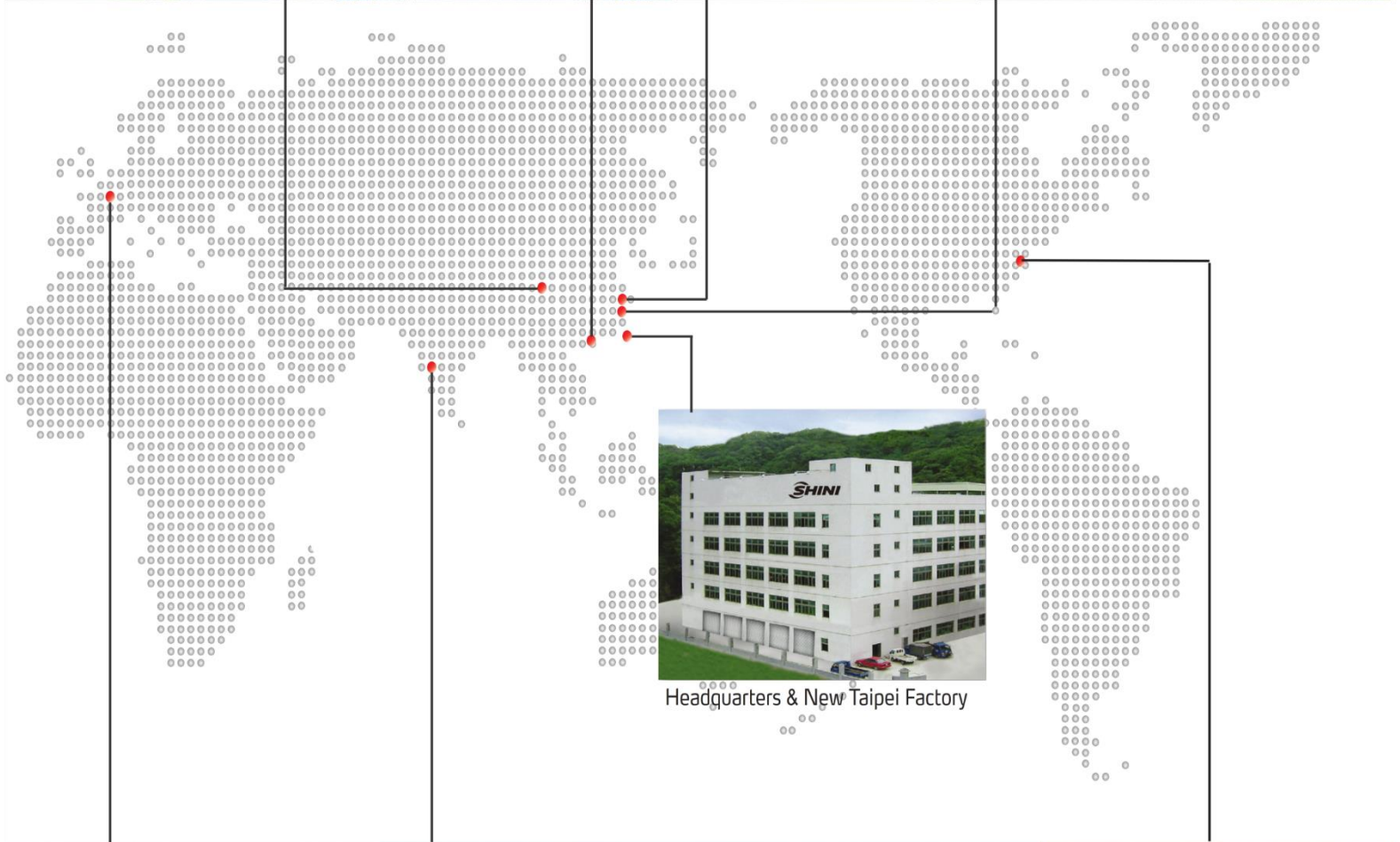
South China Factory



East China Factory



East China Factory



Headquarters & New Taipei Factory



Shini Germany Office



Shini India



Shini USA Technical & Logistic Centre

# Drying and Dehumidifying



SCD  
"All-in-One" Compact Dryers

Due to hygroscopic nature of the plastic material, drying becomes the most critical step in the process and the moisture in the material must be removed at a steady temperature for that SHINI provide hopper dryer which remove non-hygroscopic material. Dehumidifier can deliver constant low dew-point air with maximum efficiency and quality.



SD-H  
Honeycomb Dehumidifiers



SHD-U  
Hopper Dryer

Shini dehumidifying dryer can provide dew-point of  $-40^{\circ}\text{C}$  or even lower. Also it can achieve constant detection of all the parameters and stabilize the dew-point. The largest of which can provide dry air up to a quantity of  $4,000\text{m}^3/\text{hr}$ .

In dehumidifying, The molecular sieve structure of honeycomb rotor is better than the silica gel adsorption.

Used P.I.D. temperature controller to accurately control regenerative temperature.

For Centralized dehumidifying dryer system, the heat exchanger re-heat the recycling material so that it can save 20% energy.



SDD  
Dehumidifying Dryers

SDL  
Standard Drying Loaders



SHD-U  
Hopper Dryers

Shini hopper dryer adopt 7-day automatic start/stop timer to improve energy saving.

The optimal frequency control system will automatically adjust the air volume to optimize the working condition of the hopper dryer.

The reduced air volume tends to consume less power of drying heater and it automatically reduced 20% energy consumption.

SCR PET  
PET Crystallizers



Shini PET crystallizer is specially designed for the homogeneous crystallization as well overcoming glass transition temperature. Also it can avoid material bonding and bridging. With models from SCR-160U to SCR-2500U, the hopper capacity ranges from 160 to 2,500 liters.

SSMD-U  
Smart Modular Dryer



Shini smart modular dryer adopt modular structure. For more drying and dehumidifying process combination of one dehumidifier and several drying hoppers are used. The detachable stand is provided for easy to move and easy to extend.

SMD  
Mould Sweat Dehumidifiers



Shini mould dehumidifier can effectively solve the problem and ensure stable molding condition and maximum production capability of PET system. The capacity of which can provide dry air up to a quantity of 500~3,000m<sup>3</sup>/hr.

# Feeding and Conveying



SAL-U  
Self-contained Hopper Loaders

Shini self-contained and separate auto loaders can meet all kinds of requirements of no material contamination and wastage during conveying. Feeding system is made up of different hopper loaders and hoppers with conveying capacity of 2,000kg/hr and conveying distance of 100m.



SAL  
"Standart" self contained Hopper loaders



SAL-800G & SMH-6L

All material contact surfaces and filter device of the system are made of stainless steel it ensures no material contamination during conveying process.

Closed loop two-stage conveying system:  
Shini conveying system for injection moulding machine can greatly reduce the heat dissipation and the risk of material rewetting during conveying of material to the hopper.



SAL-UG  
Separate-vacuum Hopper Loaders

Vacuum blower can timely clean and protect the hopper loader by detecting the pressure difference of the filter.



Ventury Loader

The Rotary valve is most precised feeding machine and is designed for feeding the powder materials.

Rotary valve can be achieved optimal efficiency in the pneumatic conveying system and differential pressure condition.



SRV  
Rotary Valve



HRV  
High Pressure Rotary Valve



LRV  
Vertical Rotary Valve



SSC-50 & MST-S  
Flexible Screw Feeder

High pressure rotary valve is specially design for the precise dosing of plastic powder and granules. It is applied for the continuous high pressure pneumatic conveying.

Materials are conveyed from container car to material tank by air with the help of vertical rotary valve does not required any pit. Material conveying system become a convenient because of movable design so that it can be processed at any place. The system is flexible so that it can be easily fixed to any working area and also replaceable for short distance between material tank and outlet pipe.

# Dosing and Mixing



SGB  
Gravimetric Blenders

Shini Introducing volumetric doser ,Gravimetric blender,& gravimetric doser under the series of Dosing & Mixing.That can be able to meet all types of dosing requirement.

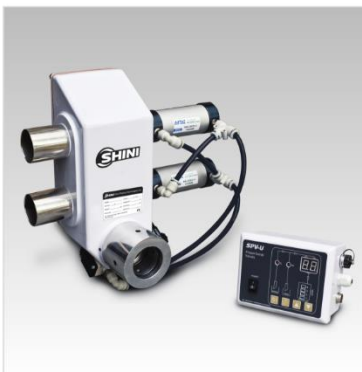
The gravimetric blender specially design for high temperature material with the gravimetric sensor and material level switch , which is also suitable for PET crystallized material.



SGD  
Gravimetric Dosers

The Shini SGB available between the output 40~3,000kg/hr and range 4~8 ingredients/meter.

The controller can be transmit the material proportion data (max. output, actual output, proportioning accuracy) for controlling quality of product with the Ethernet interface and relavant software.



SPV-U  
Proportional Valves



SVM-750U  
Vertical Batch Mixer

The regrind compensation can be automatically calculated based on the discharge amount of material.

SGD model integrates loss-in-weight calculation with the output range of 0.04-60kg/hr.



The masterbatch model SCM-H is suitable for both crystallized and non-crystallized particles with the output range of 0.1-110kg/hr.



SCM  
Volumetric Dosers



SDS-500 & MST (Option)  
Dust Separator



SSM-160U  
Storage Mixer



SMS  
Metal Detecting Separators

The inner water cooling system of High-temp. volumetric doser (SCM-H) can prevent masterbatch from falling into the main material flow of PET and melt it for ensuring accurate dosage.

For convenient masterbatch replacement SHINI provides modular assembly structure with forced cleaning function .

The current operation mode can be recorded during power failure and can be resumed when power comes back.

Molting cycle added into the masterbatch to meet the requirement of micro weight measuring.

Metal detector can be installed directly on the injection molding machine to prevent screw damage and Quickly separate the metal impurities from plastic materials. It also detect metal impurities as small as 0.5mm in diameter.

# Heating and Cooling



STM-W  
Water Heaters

For high efficiency Plastic conversion and meeting all types of temperature requirement SHINI provides water heater, oil heater, hi-pressure heater & large flow heater.



STM  
Oil Heaters



SACC  
AIR COOLING CHAMBER

Shini has different product range of mold temperature controller with temperature ranging from 95°C to 300°C and heater power from 4kw to 45kw. Equipped with turbo pump, large flow pump, magnetic pump and micro computer controller, SHINI's temperature controllers can meet all the requirements of different plastics processing.

Controller comes with 3.2" LCD display for better operation.

P.I.D. temperature control system can be maintain and stabilize the mould temperature at any given-time, control accuracy is  $\pm 0.5^{\circ}\text{C}$ .

For meeting the requirements of precision moulding, SHINI provides a high-efficiency, high temperature pumps.



STM-W/O  
Dual-purpose Water / Oil Heaters



SICC-W-R3  
CFC-free Refrigerant Water-cooled Central Water Chillers

injection molding and all kinds of plastic molding equipments requires precise cooling. Shini water chillers can achieve accurate control of temperature & flow pressure, For maximized cooling effect, Shini provides air-cooled and water-cooled water chiller, cooling tower, pump and water tank. Based on the standard technology, Shini can provide customized solutions for its clients.



SIC-W-R2  
CFC-free Refrigerant Water-cooled Water Chillers



SFR-600  
Water Flow Regulator

Shini water chiller with the refrigerent R410A, is work on the environmental protection system, which is not affect on Ozon layer.

It follows high standard globally environmental protection demand.

New generation water chiller possess high reliability and high efficiency. This water chiller comes with the low noise cooling fan which gives stable, safety and reliable work output under the temperature of 0-45°C and also gives chilling water outlet temp 5-25°C. The degree of energy efficiency matches with the national energy efficiency index.



SIC-A-R2  
CFC-free Refrigerant Air-cooled Water Chiller

The water chiller contains a round self-stir water tank which is of large capacity. In addition, it build up with rust proof water pipeline. The new micro-computer controll makes operation convenient and diversity the functions.

The moderate design and installation of the water pipeline system makes cooling operation more smoothly and simultaneously lower the

# Granulating and Recycling



SG-24N  
Screenless Granulators

Shini's side granulator for IMM includes screenless granulators and low-speed granulators which is suitable for crushing sprues and it results into very few material rejection. It is located on the side of IMM and picker.



SG-16N/20N  
Low-speed Granulators



SG-3650E  
"Standard" Central Granulator

The Screenless granulator, teeth cutters and cutting blades are integrally fitted in one cutting chamber. There are least dusts produced in the cutting process.

New-type inclined teeth cutter reduces the possibility of stress concentration & enhance bearing capacity and converts force direction so that cutter lifespan can be prolonged.

When blockage creates trouble in motor operation, it shows the alarm on screen & it automatically enable the motor to start running reversely. after resolved the trouble motor return to its normal operation

The modular structure and operational safety of SG-EB model is same as standard model. the advantage is, it save more energy than standard model. The granulators are used to granulate various types of plastic materials from injection molding, blow molding or wasted materials.



SGF-26E  
Roll-feed Granulators



SG-2130EB  
Budget Central Granulator



Shini sound-proof central granulators are suitable for centralized recycling of waste and rejected material from IMM and blow molding machine. The range of cutting chamber size is from 230×240mm to 700×1200mm.

SG-23/30  
Sound-proof Central Granulators



SG-43  
Sound-proof Central Granulators

The new designed Blade retainer gives quick blade replacement without any adjustment.

It Equipped with electrical current relay, motor overload protector and multiple safety devices.

The rotating cutters of granulator in the large size cutting chamber works on V-type cutting technology which can send the feeding material into the center of rotating cutters so to prevent the material from adheres onto the inner side of the cutting chamber so automatically enhance its wearability.

### 3 Rotating Blades and 2 Fixed Blades (Standard Type)

The model of two rows fixed blades gives the big inlet space and initially low cutting point. The Material can be easily grabbed and cut, thus it makes rotor housing ideal for the granulation of hollow objects such as bottles, crates and drums as well as large bulky materials.

### 5 Rotating Blades and 3 Fixed Blades

This semi-closed rotor has much less space between the blade rows thus preventing material from falling into the rotor. These massive, extremely robust rotors are ideally suited for difficult & heavy duty applications such as start-up lumps and head waste, thick walled pipes, heavy sheets etc.



SG-70  
Sound-proof Central Granulators

# Granulating and Recycling



SGS-S  
Shredders

The newly developed SGS-S series shredders from SHINI is specially designed to solve the problem of "traditional granulator can't recycle waste material". It could be widely used for cutting all types of plastic piece, plastic with thin shell, pipe etc.



CBD  
Up-feed Belt Conveyor



PNL-MS  
Belt Conveyor with Metal Detector

Shini launches belt conveyors of different functions and structures, like PNL/CB/CBD/SV.

PVC belt is adopted for smooth and efficient conveying. As per the requirement, we can adjust the height of machine within a certain range.

PNL-MS is equipped with channel metal detector to effectively detect metal in the channel. The minimum detectable diameter of metal ball is  $\text{S}\Phi 5\text{mm}$ .

The conveying speed of the belt conveyor is adjustable. The speed range of PNL-MS is 1.3-8m/min while the rest of models is 0-6m/min.



SS  
Swing-arm Robot

The SS series robot is designed for removing sprue, runner, and product from injection molding machine. It employs rack and pinion system which converts linear motion to rotary motion without damage to cylinders. The shock absorber and angle tuning system provides a smooth and precise swing motion.



ST1  
Single Axis Servo Driven Robot

The ST1 series robots with standard and telescopic arms are applicable to co-operate with 2-plate mold, 3-plate or hot runner system. EUROMAP 12, EUROMAP 67 and SPI are designed for Interface between injection molding machine and robot.

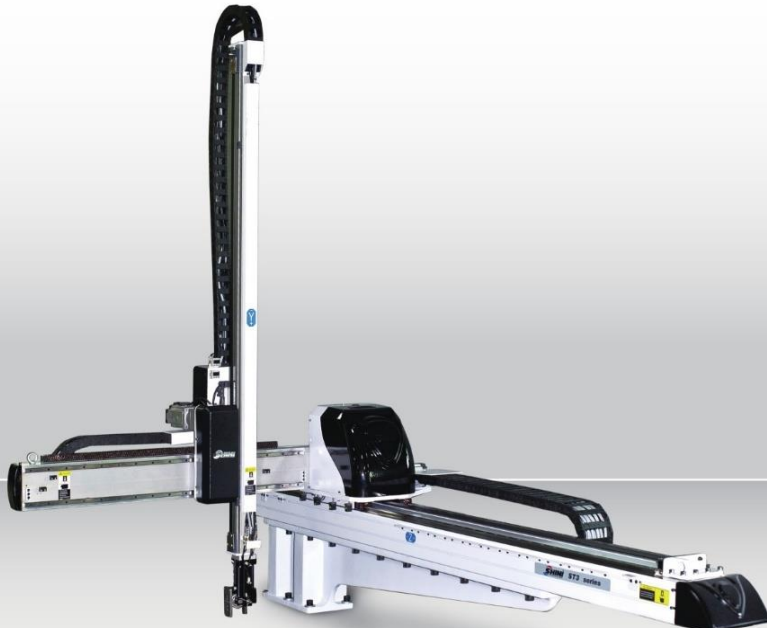
The ST2 series robots with one arm and double arms comes under the standard and telescopic arms models.

Y servo motor is suitable for single, short cycle time mold.

X servo motor suitable for frequently changing mold application & easy to adjust X stroke.



ST2  
Two Axes Servo Driven Robot



ST3  
Three Axes Servo Driven Robot

The ST3 series robots with standard and telescopic arms are applicable to co-operate with 2-plate mold or hot runner system. Capable of arranging, stacking, quality checking and in mold placement. Suitable for injection molding machine under 3600T clamp force.



SSE  
Side Entry Robot



SS-550-S  
Swing arm Robot

The SSE series robot is designed for extremely short cycle time of IMM less than 6 seconds and under 600T clamp force.

#### Control System

Dialogic hand controller provides English, Japanese, Traditional Chinese and Simplified Chinese. Other languages are applicable; up to 8 different languages can be stored. There are 8 standard programs and memory for up to 80 customized programs with self fault detection.



ST5-S  
Five Axes Servo Driven Robot

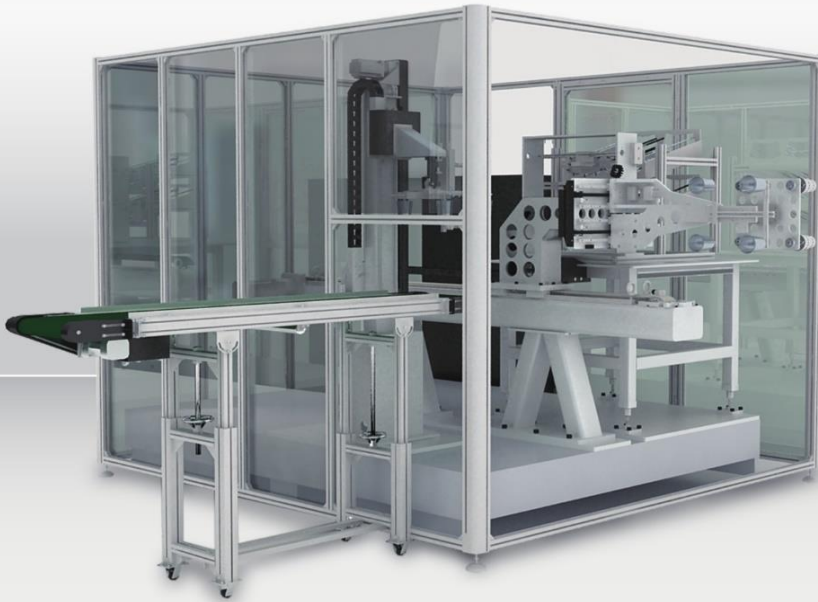
The SS-5 series robot is designed for rapid and precise removal of sprue and runner from injection molding machine and place them into granulator for recycling.

Simple product removal is applicable with optional vacuum generator and EOAT. Suitable for injection molding machine under 250T clamp force.



o

in mold labeling system SHINI provide-  
top and side entry robot and are  
applicable to co-operate with single  
face mold with 1, 2, or 4 cavities. it is  
Suitable for injection molding machine  
under 450T clamp force. it automati-  
cally place labels and take out product  
rapidly, cycle time is 4 to 6 seconds,  
improve the production efficiency and  
the production quality.



SIS  
Side Entry In Mold Labeling Robots System



SVT  
Vertical Transporter

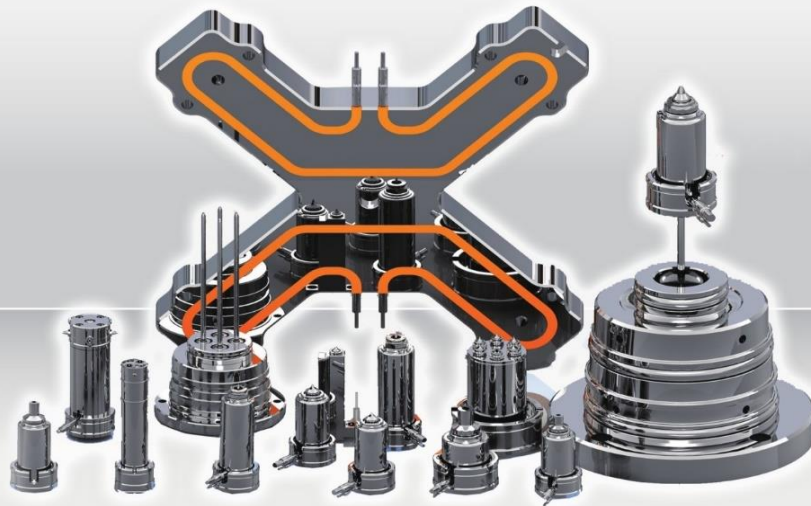
The SVT series transporter is  
designed for taking products from  
robot.it improving machine utiliza-  
tion rate and keeping safety.  
Connection with robot signal gives  
precised pick up of product and  
protects from any damage during  
handling.

The Shini belt conveyor is designed  
for delivering products from robot  
pick up point to drop point with  
improved working efficiency and  
without any damage,Communica-  
tion with the robot signal achieve  
full automated operation. For that  
application SC and SCI belt  
conveyor can be used.



SC  
Inclined Belt Conveyor

# Hot Runner System



It's suitable for materials which is in the range of  $\text{Ø}0.6\text{-}\text{Ø}0.8\text{mm}$ . hot mould nozzle size  $\text{Ø}12\text{mm}$  ensure the strength and fulfill special requirements of products. the length of nozzle can be from 40mm to 500mm.



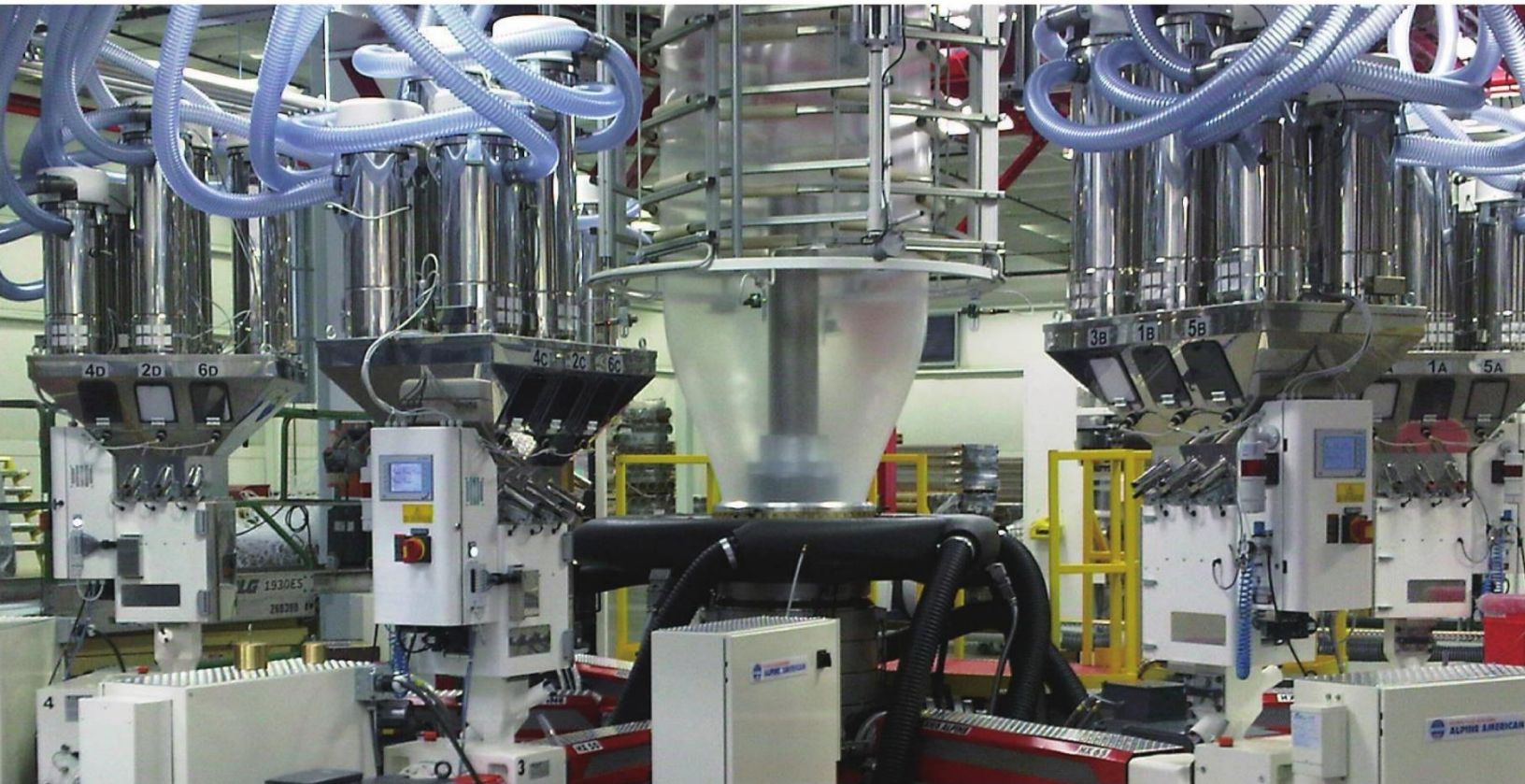
SHTC-E  
Temperature Controller



SHTC-V  
Timing Controller

Temperature controller device constantly maintain the required temperature value of the hot runner system. It is made up of temperature control card, circuit breaker, cabinet, fan, terminal blocks and cables. The temperature control card in the cabinet, controls the temperature of the hot runner product. The accuracy of temperature control systems, self-protection and fault tolerance depends on the temperature control function of the card. At present, temperature controller is a prerequisite in the use of hot runner molds.

Timing controller is equipment that controls nozzle injection time orderly in solenoid valve hot runner system. Timing controller control each gate of hot runner system controlled.



SYdos  
Loss-in-weight continuous Dosing System

SYdos is continuous loss-in-weight gravimetric dosing system designed to dose and feed multiple components in all process in which a constant gravimetric feeding is required. Main material is weighed by two off-centre load cells and the data is transfer to control system to adjust the screw speed with the data transferred by each load cells of other materials. Control software of SYdos consists of loss-in-weight control, gram/meter and throughput control and material consumption control.



Extrusion gram/metre & yield control



auto profile control



Online thickness measurement



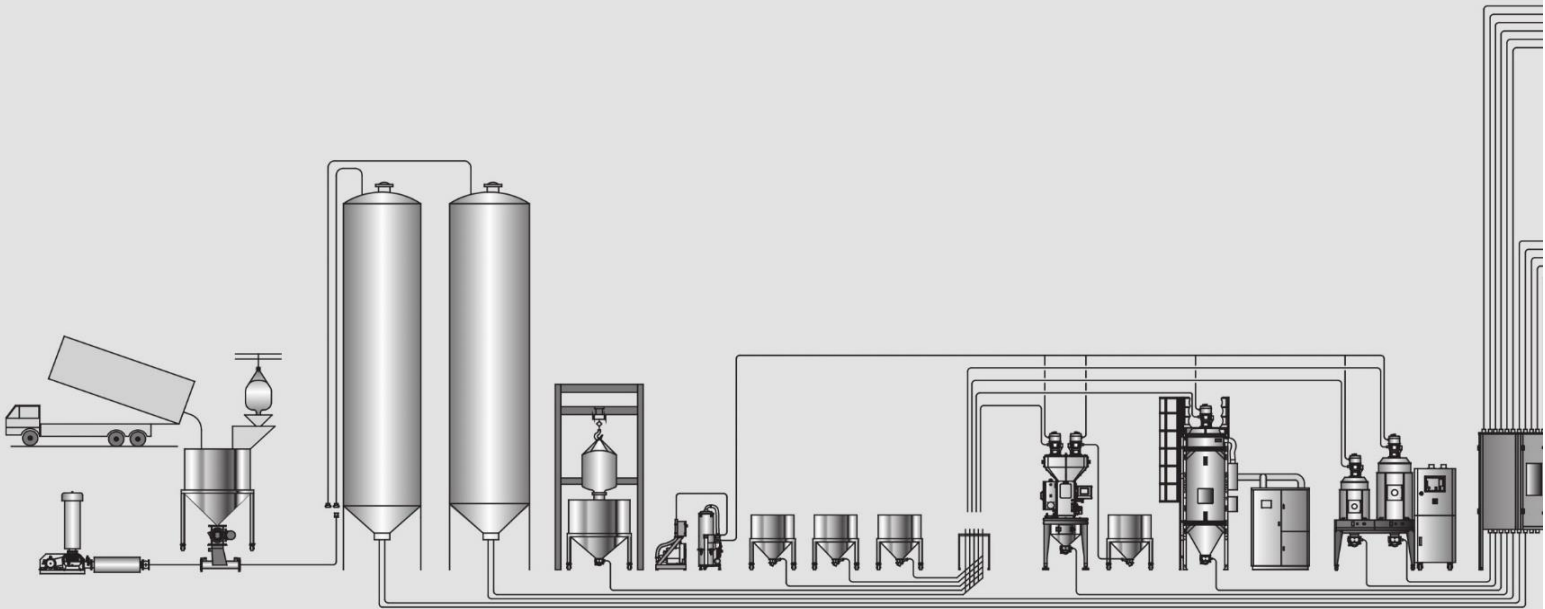
IBC inner cooling control



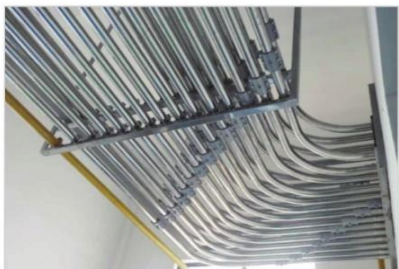
# System Solutions

Shini is always there to help you enhance effectiveness and improve quality as well as your competitiveness in marketing.

Shini is able to cater different needs by providing customized material handling solutions.



Storage

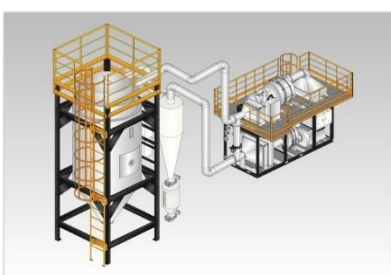
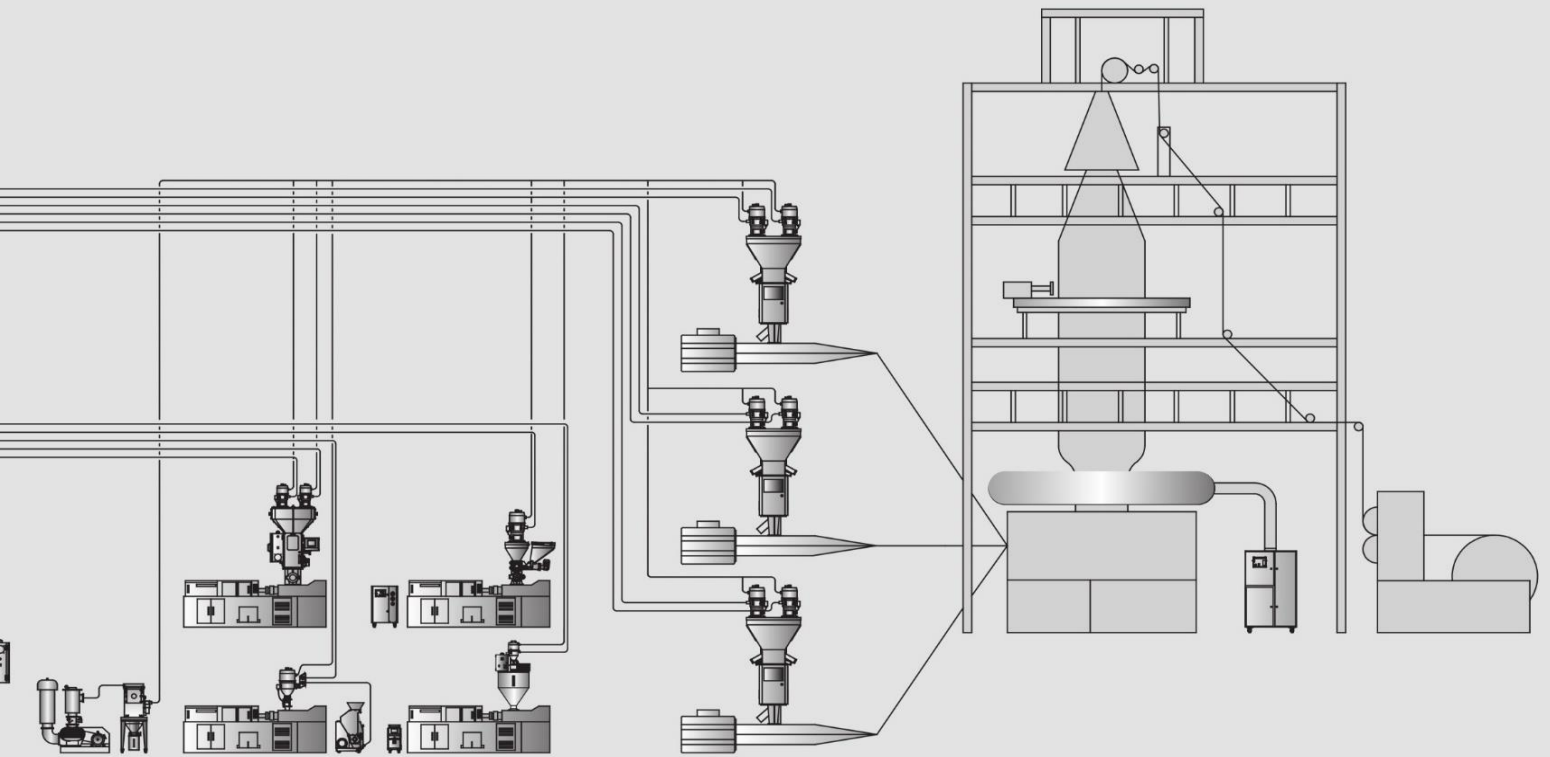


Conveying



Distribution





Dosing and Mixing

Drying

Extrusion Control

## Asia

### Korea

#### Skatec Co., Ltd.

2234-13, Jeongwang-dong,  
Siheung-si, Gyeonggi-do Korea  
tel: +82 (0)31 497 8072  
fax: +82 (0)31 432 6490

### Indonesia

#### PT. Benua Kencana Makmur

Bandengan Selatan NO. 84 A/1,  
Jakarta Utara, 14450  
Indonesia  
tel: +62 21 661 3453  
fax: +62 21 666 00907

### Malaysia

#### WY MACHINERY TRADING (KL) SDN. BHD.

No.43, Jalan Meranti Jaya 8,  
Meranti Jaya Industrial Park,  
47100 Puchong,  
Selangor D.E., Malaysia  
tel: +603-80608143  
fax: +603-80624099

### Thailand

#### Shini Plastics Technologies (Thailand) Co., Ltd.

78/6 JST Building 2nd Fl. Room  
No. 2B, Moo 7 Kingkaew road,  
Rachatewa, Bangplee,  
Samutprakarn 10540, Thailand  
tel:+66 (0) 2738 4503-4  
fax:+66(0) 2738 4505

### Vietnam

#### Tan Ky Nguyen Co., Ltd.

17 Phan Phu Tien, Dist.5,  
Hochiminh City, Vietnam  
tel: +84-8-8593686  
fax: +84-8-9505565

### Uzbekistan, Kyrgyzstan, Turkmenistan, Tajikistan Kazakhstan

## America

### Canada

#### Hamiton plastic systems Ltd.

Customer service Unit #2-230  
Brunel Road, Mississauga,  
Ontario Canada L4 Z 1T5  
tel: 905 890 0055 ext 102  
fax: 905 890 1513

### USA

#### Budzar Industries, Inc.

38241 Willoughby Parkway  
Willoughby, Ohio 44094-7582,  
U.S.A  
tel: +1 440 5301 000  
fax: +1 440 5301 001

### Mexico

#### Dycomet S.A DE C.V.

Av de Las Granjas 758-B, Col.  
Sta. Catarina CP 02250,  
Mexico, D.F.  
tel: + 52 55 9172 0200  
fax: + 52 55 9172 0211

### Peru

#### Asia Plastic Solutions

Address: Calle Los Milanos  
No 135, Of 302 Lima 27 - Peru  
tel: +51-1-615-1400  
fax: +51-1-6151401

### Colombia

#### Imocom S.A.

Calle 17 NR. 50 24 Bogota,  
Colombia  
tel: +57 1 417 4730  
fax: +57 1 2616019

### Venezuela

#### Imocom de Venezuela, C.A.

C.E. Este Oeste Local 25 Calle  
Este Oeste 2 Con Av Norte Sur3  
Zona Industrial Norte, Valencia,  
Edo. Carabobo, Venezuela  
tel: +58 241 8325 794  
fax: +58 241 8385 319

#### Xinjiang Huangjin Mid-Asia Engineering Technology Co., Ltd.

Gaomi residential area 4-1-103,  
No.580 Heping South Road,  
Tianshan Dist., Urumchi City,  
Xinjiang P.R.C, China  
tel: +86-0991-8569099

### Sri Lanka

#### CMC Engineering Export GmbH

NO.346, Nawala Road,  
Rajagiriya, Sri Lanka  
tel: +94 11 2806 776(9)  
fax: +94 11 2806 780

### Pakistan

#### OROTECH

Shop no.3, Shadman Apartment,  
Opp. Bohri Masjid, Off.  
Shaheed-e-Millat Road, Karachi.  
tel: 0092-21-34320600  
fax: 0092-21-34320800

### Chile

#### Asia Plastic Solutions

Av Americo Vespucio Norte  
No. 1385, Edificio A Modulo  
5, cod. Postal 8730596,  
quilicura, santiago-chile  
tel: 56 9 91588675  
fax: 56 2 3357 184

### Argentina

#### Eldan Electronica S.A.C.I.F.L.A

Bahia Blanca 2159 C1417ASA.  
CDAD. BUENOS AIRES, Argentina  
tel: +54 11 4566 5020  
fax: +54 11 4566 2079

### Brazil

#### SHINI DO BRASIL

Rua Baquiá, 651 - Vila Nova  
Manchester - São Paulo - SP -  
CEP: 03443-000, Brazil  
tel: +55 11 2225 1721  
fax: +55 11 2225 1724

### Ecuador

#### IMOCOM ECUATORIANA CIA LTDA.

Av. Galo Plaza Lasso N66-282 y  
de los Aceitunos - Quito Ecuador  
tel: +593 26002070  
fax: +593 26002071

## Europe

### Poland

#### SHINI GROUP

UL. BOR 77/81 42-202  
CZESTOCHOWA POLAND  
tel: +48 34 363 48 78  
fax: +48 34 360 88 66

### Hungary

#### Extremplast BT. Co

8000 Szekesfehervar,  
Berenyi ut 1/A, Hungary  
tel: +36 22 784 270

#### StarPlus M-anyagipari Kft.

Sajószigeti út 4. 3527  
Miskolc Hungary  
tel: + 36 (46) 584 060  
fax: + 36 (46) 584 070

### Serbia

#### Plastma D.O.O.

Kralja Petra I 67 21000 Backa  
Palanka, Serbia  
tel: +381 21 6043 821  
fax: +381 21 60 40 449

### Russia

#### Plastautomatic Co.

127018, 2-ya Yamskaya str.2,  
Moscow Russia  
tel: +7 495 7802001  
fax: +7 495 7802001

#### Polipak LLC

Tverskaya Street 26A, Dubna  
town, Moscow region,  
Russia, 141983  
tel: +7(49621)2-5555, 7-0000  
fax: +7(49621)2-4632

#### Russia Eastex Technologies

Rm239,bld.4,32 Bolshaya  
Dmitrovka St.,Moscow,  
107031,Russia  
tel:+(495) 223 32 30  
fax: +(495) 223 32 30

#### GlobalMash, Ltd (Astron-C-Group, Ltd)

№25, Timiryazeva Street,  
Chita, Russia  
tel:+7-3022-356773  
fax: +7-3022-356773

№26, Kotlyakovskaya Street,  
Moscow, Russia.  
tel:+7-495-923-8988

#### AvangardPLAST co.,Ltd

Russia, Novosibirsk City  
tel:(383) 354-22-45  
Russia, Nizhny Novgorod City,  
Tel.: (831) 435-48-49

### Sweden

#### BTS Nordic SHINI SWEDEN

Tostaredsvägen 1097,  
SE-439 75 Fjärås  
tel: +46 300 542970  
fax: +46 300 542980

### Portugal

#### Deltaplas, Lda.

Zona Industrial Da Barosa,  
Petigais, 2400-013, Leiria,  
Portugal  
tel: +00351 244 823 198  
fax: +00351 244 823 218

### Slovak

#### A.M. SK. S.r.o.

OrdreJovova 4 821 04  
Bratislava, Slovak  
tel: +421 905 349 777  
fax: +421 2 4463 8827

### Italy

#### CMT SRL

PIAZZA CAMPO MARZIO,  
15 36071 ARZIGNAO(VI) ITALY.  
tel: +39 04441572817  
fax: +39 04441572815

### UK + Ireland

#### SHINI UK TRACE PT LIMITED

404 Milton Keynes Business  
Centre, Foxhunter Drive  
Milton Keynes,  
Buckinghamshire, MK14 6GD, UK  
Tel: + 03334 561156  
Fax: + 03334 561157

### Benelux

#### SHINI BENELUX

Tempelhof 4 3045 PV  
Rotterdam The Netherlands  
tel: +31 (0)85 7842833  
fax: +31 (0)84 8365499

### Czech Republic

#### A.M. Spol. S.r.o.

Sladovnicka 167, 46311 Liberec  
Czech Republic  
tel: +420 48 2750 037  
fax: +420 48 5163 999

### France

#### Mat-Plast

46, Route De Dortan, 01100  
Oyonnax, France  
tel: +33 04 7477 5296  
fax: +33 04 7473 9106

### Cyprus

#### M. Sideris and Son Ltd

45, Lefkosias Street,  
Dhali Industrial Zone,  
2540, Dhali, Nicosia, Cyprus  
tel: 00357 22610700  
fax: 00357 22610800

### Finland

#### Polyplast

Uurontie 80, 80770  
KONTIOLAHTI As.FINLAND  
tel: +358 41 4556 445  
fax: +358 13 733 230

### Malta

#### YIELD247 Limited

Cinzia Buildings /2, Guze  
Orlando Street, Birkirkara  
BKR 1751 - MALTA  
tel: +356 21 243 123  
fax: +356 21 243 138

## Oceania

### Australia

#### Haitian Direct P.L.

11-13 Brooklyn  
Avenue Dandenong Vic. 3175  
Australia  
tel: +61 400 772 065  
fax: +61 359 764 053

### New Zealand

#### Machinetech Ltd.

112A MAYS ROAD, PENROSE,  
AUCKLAND 1061, NEW ZEALAND  
PO. BOX 12899  
tel: +64 9 633 0071  
fax: +64 9 633 0072

## Africa

### S. Africa

#### Cabletech Marketing (Pty)Ltd.

10 Staal Street Kya Sands,  
Randburg, South Africa  
tel: +27 11 704-0824  
fax: +27 86 637-4749

### Tunis and Algeria

#### Epsi SA and Epsi Distribution

9 rue des Frères Lumière 69720  
Saint Bonnet de Mure FRANCE  
tel: + 33 (0) 4 37 25 60 00  
fax: + 33 (0) 4 37 25 60 01

### Egypt

#### Makinat Abouseif (Engineering and International Trading Co.)

Abu Rawash – KM 28 Cairo  
– Alex Road  
tel: +2 02 35 39 27 28  
+2 02 35 39 27 29  
fax: +2 02 35 39 27 30

#### Ethiopia, Uganda, Kenya, Tanzania, Nigeria, Ghana

#### Plastech International FZC

Indl Shed P6-63, Saif Zone P.O.  
Box 121696, Sharjah, UAE  
tel: +971 6 5579160  
fax: +971 6 5579162

## Middle East

### Iran and UAE

#### ARAS MACHINERY COMPANY

No. 26-28, 4th Floor.,  
Seray – E –Omid, 15th Khordad  
Ave, Tehran 11169, Iran  
tel: +98 21 7733 2013  
fax: +98 21 7734 3985

### Turkey

#### HASTEK PLASTIK TEKNOLOJISI VE OTOMASYON SISTEMLERI PAZARLAMA SAN. TIC. KOLL. STI.

MUHARREM MANAV-CEM  
OZKARACALAR - ISTANBUL  
TRAKYA SERBEST BOLGESI,  
GONCA SOK. 1/4 BLOK K:3  
NO: 16-34870 CATALCA  
- ISTANBUL - TURKEY  
tel: +90 212 6716 050  
fax: +90 212 6716 051

### Israel

#### AVIVAN LTD.

22 Zufit ST., 45354 Hod-  
Hasharon, Israel  
tel: +972 9 7463 984  
fax: +972 9 7601 371

### Lebanon

#### KUMARO S.A.R.L

CHOUEIFAT – OLD SAIDA  
ROAD KUMARO BLDG.

tel: 00961-5-437307 / 437822  
fax: 00961-5-430891 / 437308

## Branches

### USA

#### Shini Plastics Technologies, LLC

4189 Capital View Dr.  
Suwanee GA 30024  
tel: +1 770-831-5959  
fax: +1 770-831-5656

### Germany

#### SHINI Germany GmbH

Shini Germany GmbH  
Maichingerstr. 62  
71106 Magstadt  
Contact Person:  
Ms Stefanie Weissglas  
Tel. +49 (0) 7159 933 2244  
office@shinigermany.com  
www.shinigermany.com

## Factories

- Taipei, Taiwan
- Dongguan, China
- Ningbo, China
- Pinghu, China
- Chongqing, west China
- Maichingerstr, Germany
- Suwanee, USA

### ■ Pune, India

#### **Shini Plastics Technologies India Pvt Ltd.**

Plot A-46, Chakan MIDC, Phase II, Village-Vasuli,

Tal-Khed, Dist-Pune-410501

Tel: +91 02135-660600

Email: India@shiniindia.com

## Branch Offices in India

- Mumbai
- Pune
- Bangalore
- Ahmedabad
- Indore
- Delhi
- Haridwar
- Kolkata
- Hyderabad
- Chennai